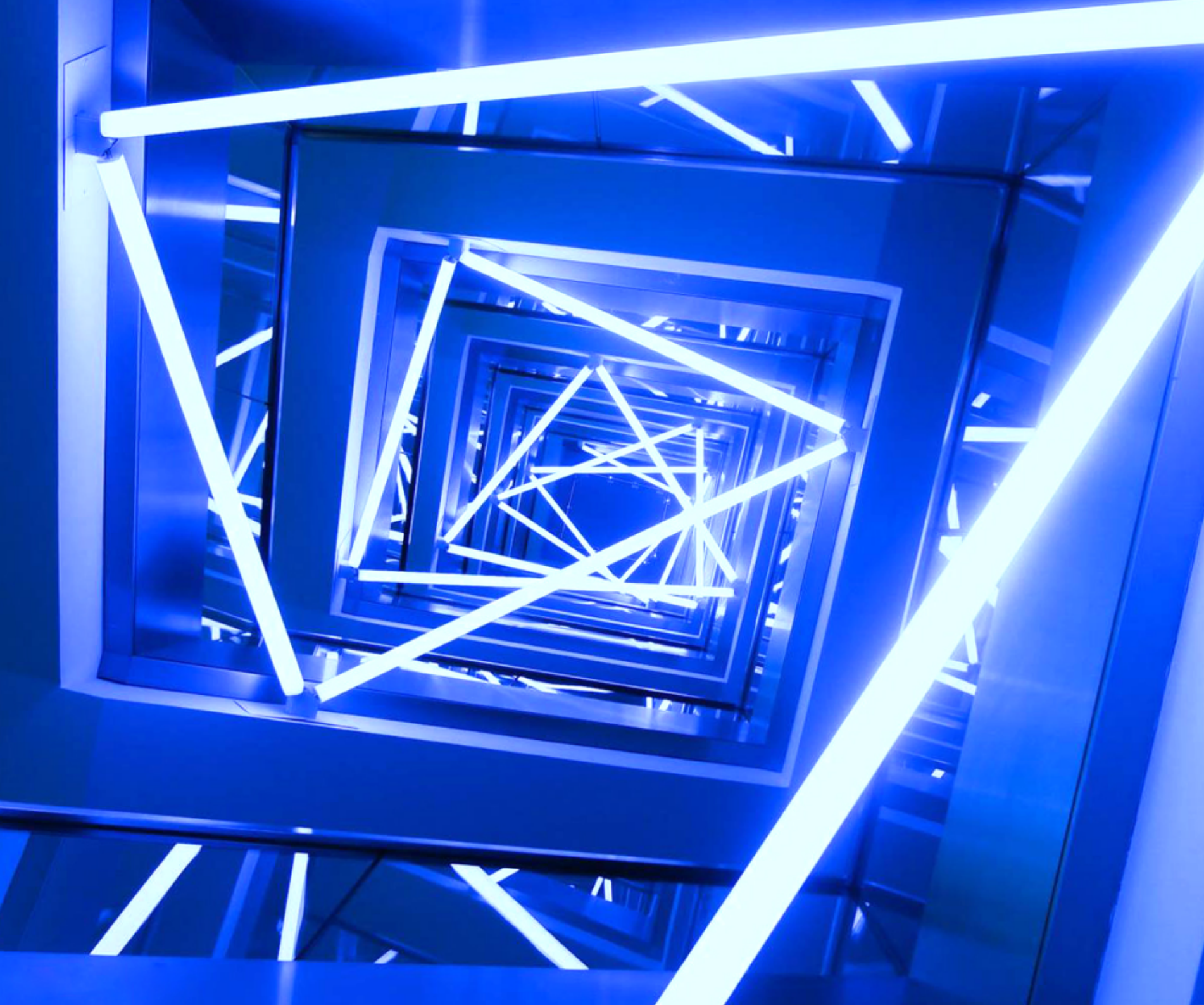


interior



ad men
anno 1992

PRESENTATION



light







design





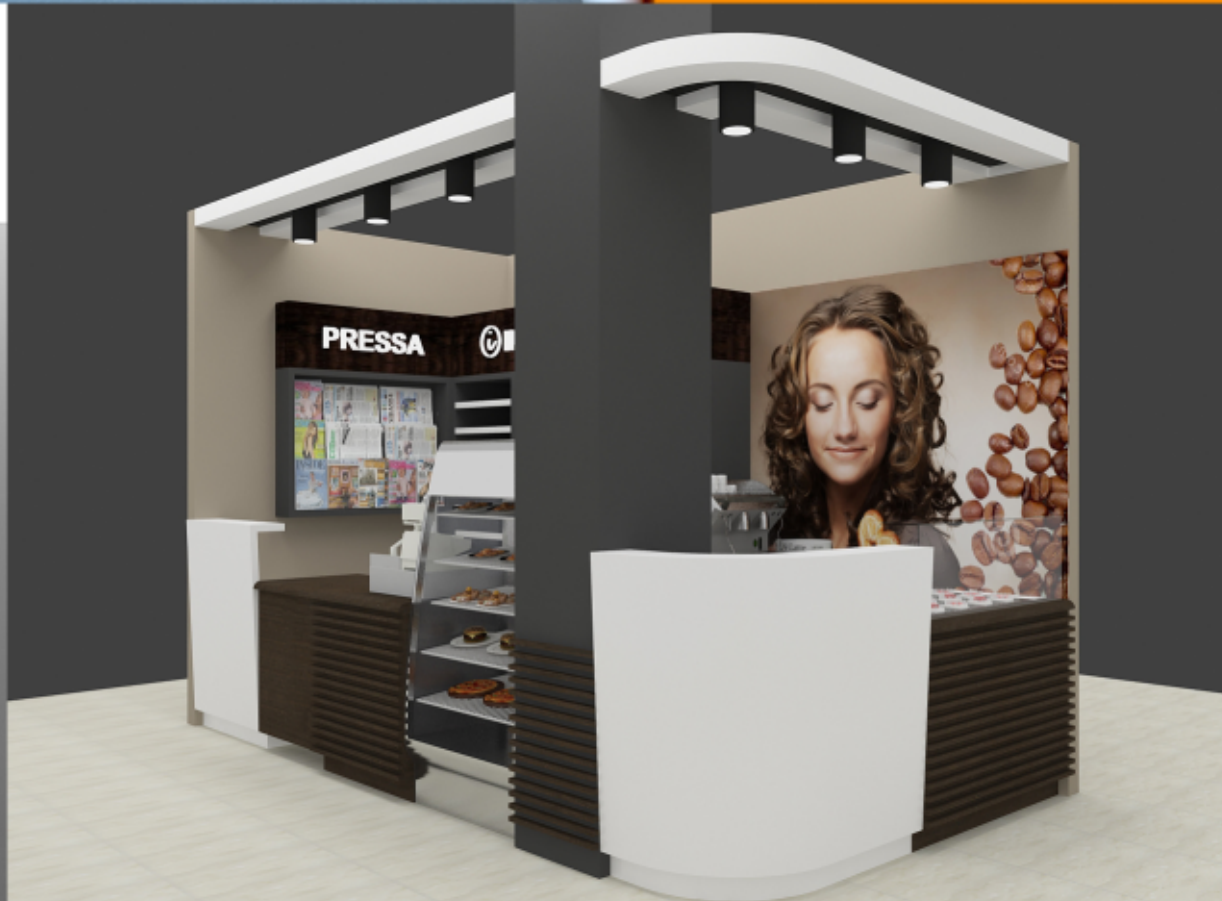
stand





portal





3D
graphic





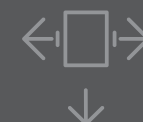


shop decor





sign



Our production facility is 4,500 sq. metres. We have 150 employees. 90 of them are blue-collar workers involved in production.

Every year we manufacture over 5,000 outdoor advertising products. We widely use aluminium sheets, organic glass and high quality LEDs. The overall yearly amount of raw materials used is over 100,000 m².

We continuously invest in:

- people development and training;
 - upgrading equipment & facilities;
 - comfortable working conditions and environmentally friendly technologies.
- We believe it pays back in success in the long run.



export



interior



admen
anno 1992

www.admen.it